



R&R Drafting

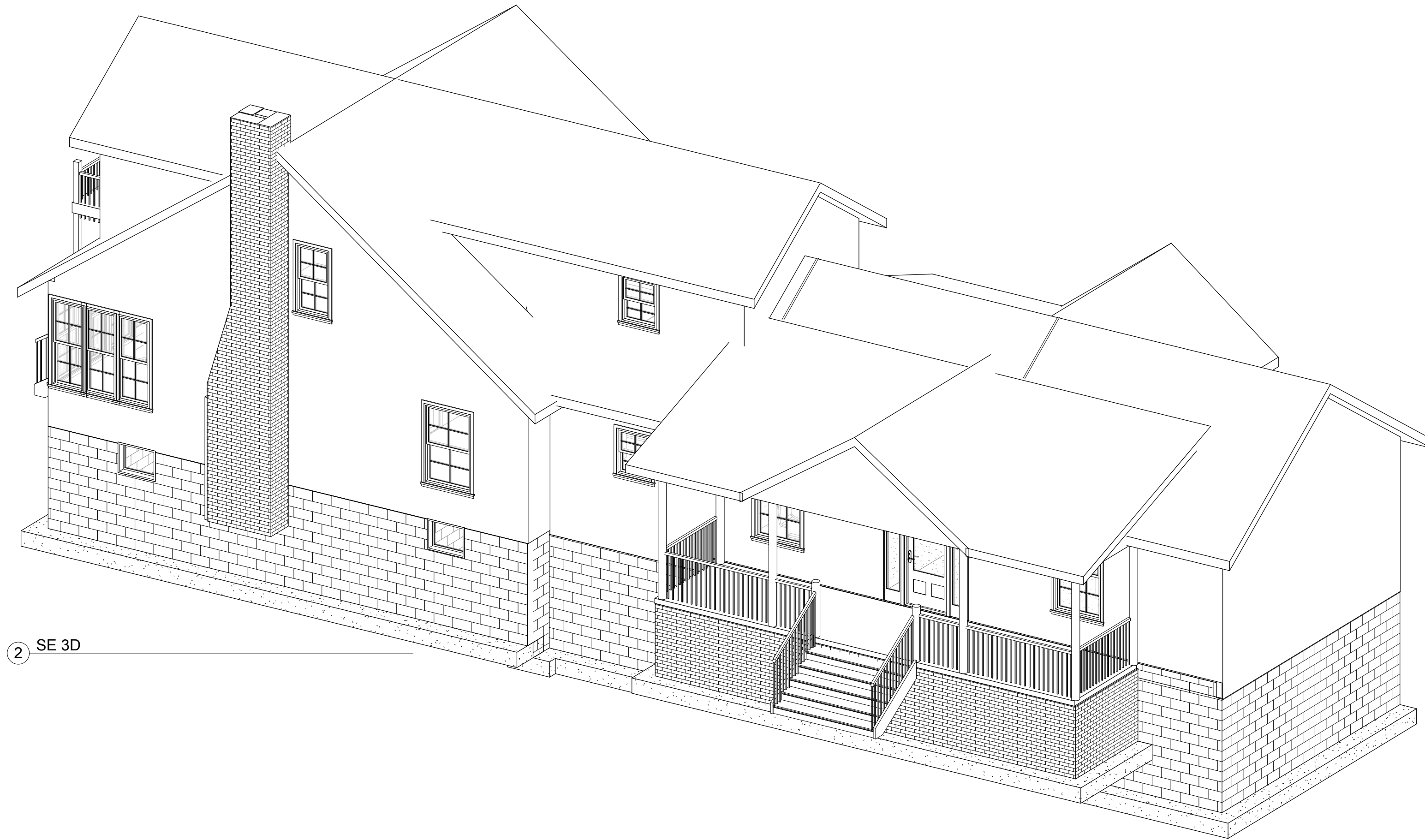
Note: I do not offer Architectural / Engineered Stamped plans. If you need stamped plans you will have to contact local Engineer to add any necessary detailed drawings to plans & to Stamped or Certify the Drawing Plans.

Typically Roof/Floor Truss, Beam Suppliers/Manufactures will supply Engineered Stamped product & layout plans for their products.

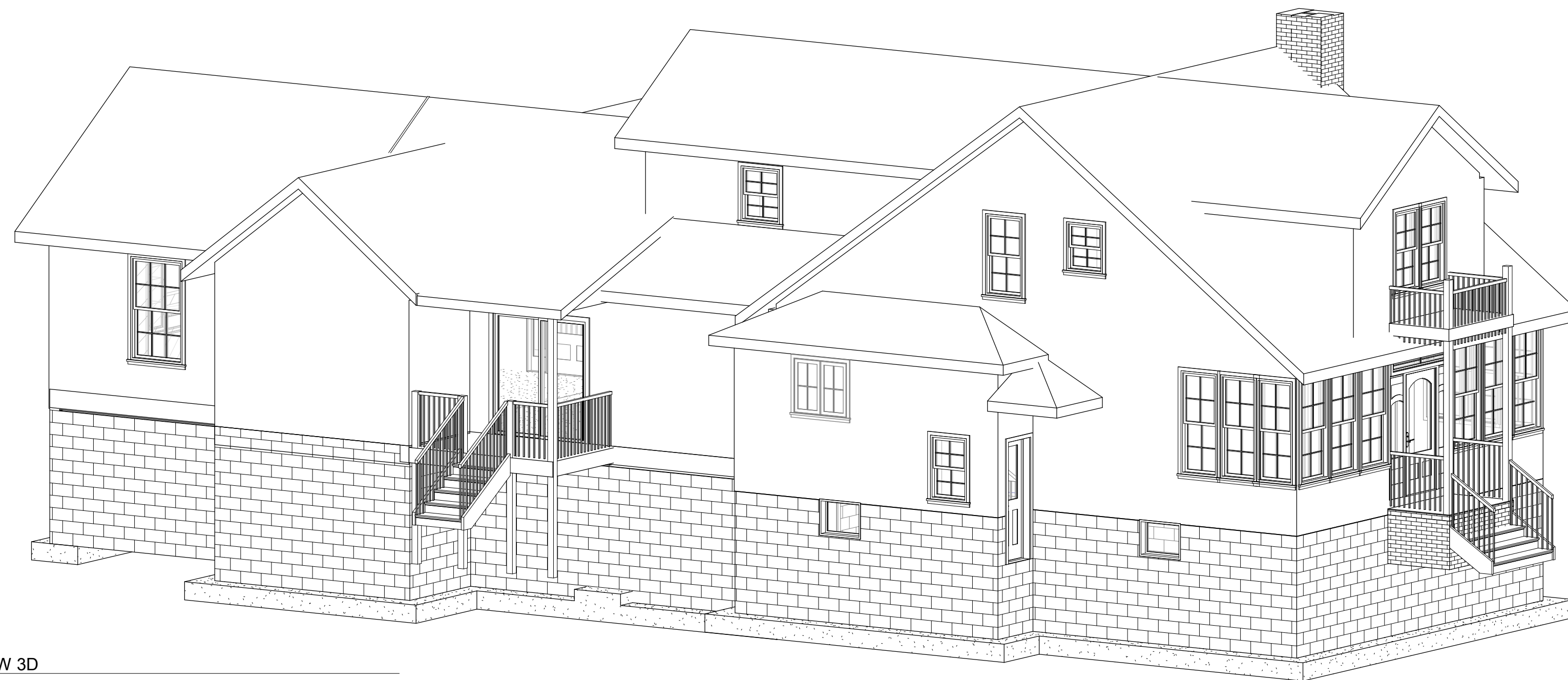
P.S. Most Area's do not require Architectural Stamped plans, check with local building department for requirements.

Plan Ownership:

After plans are complete, Both parties will own & be free to reproduce and or sell plans.



② SE 3D



① SW 3D

Cover

Revisions #5	
Date	10/13/2017
Drawn by	Author
Checked by	Checker

A100

Scale



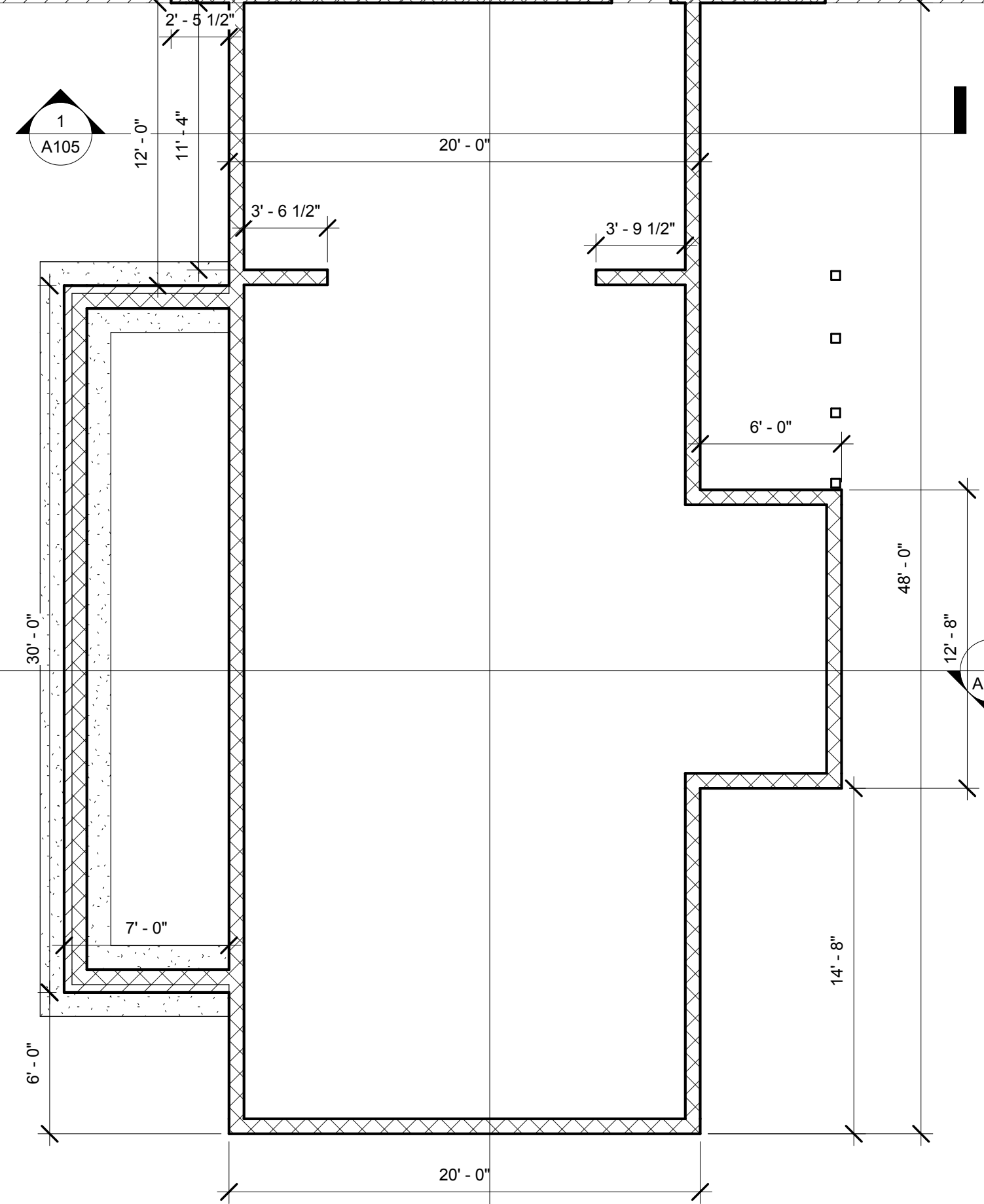
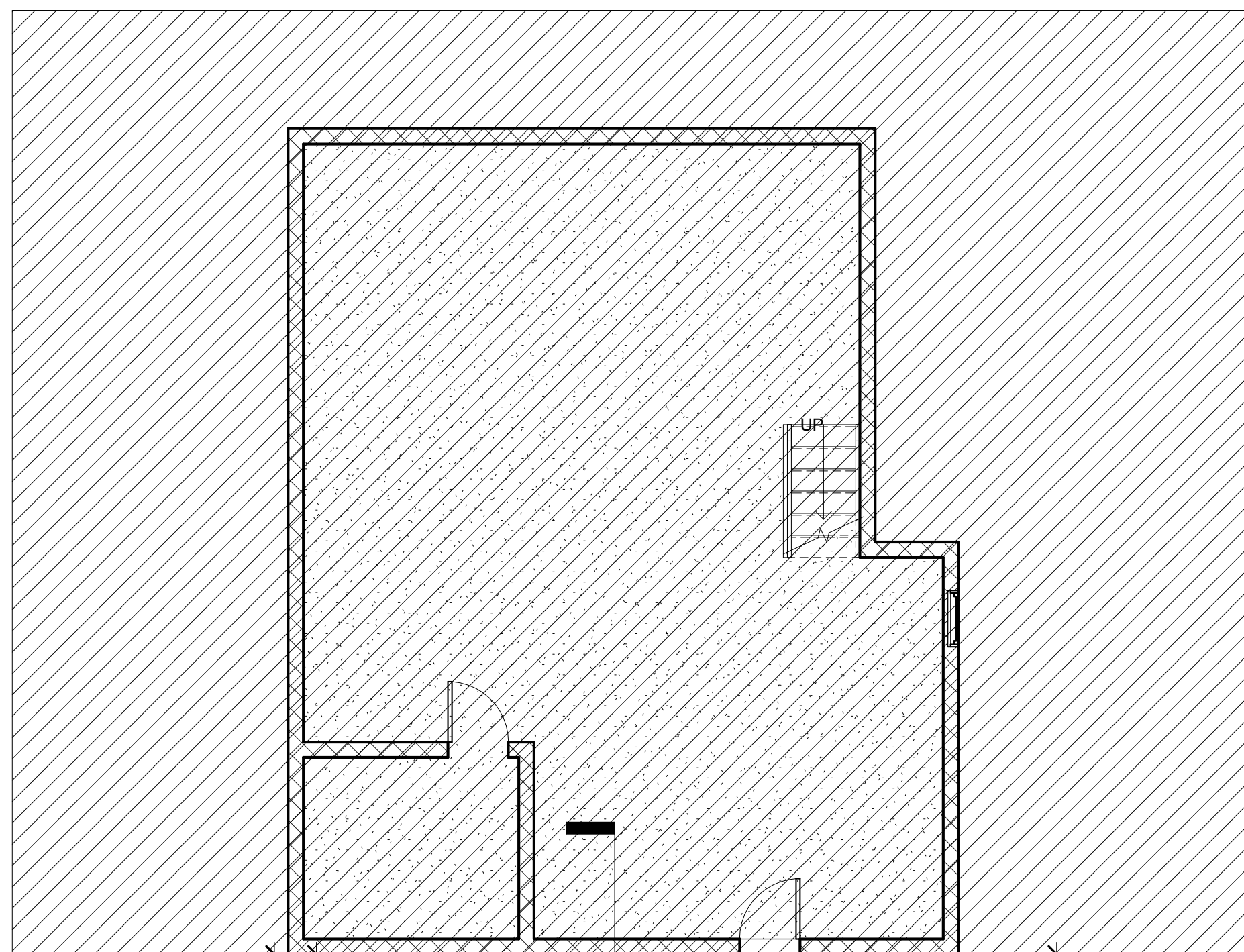
R&R Drafting

Note: I do not offer Architectural / Engineered Stamped plans. If you need stamped plans you will have to contact local Engineer to add any necessary detailed drawings to plans & to Stamped or Certify the Drawing Plans.

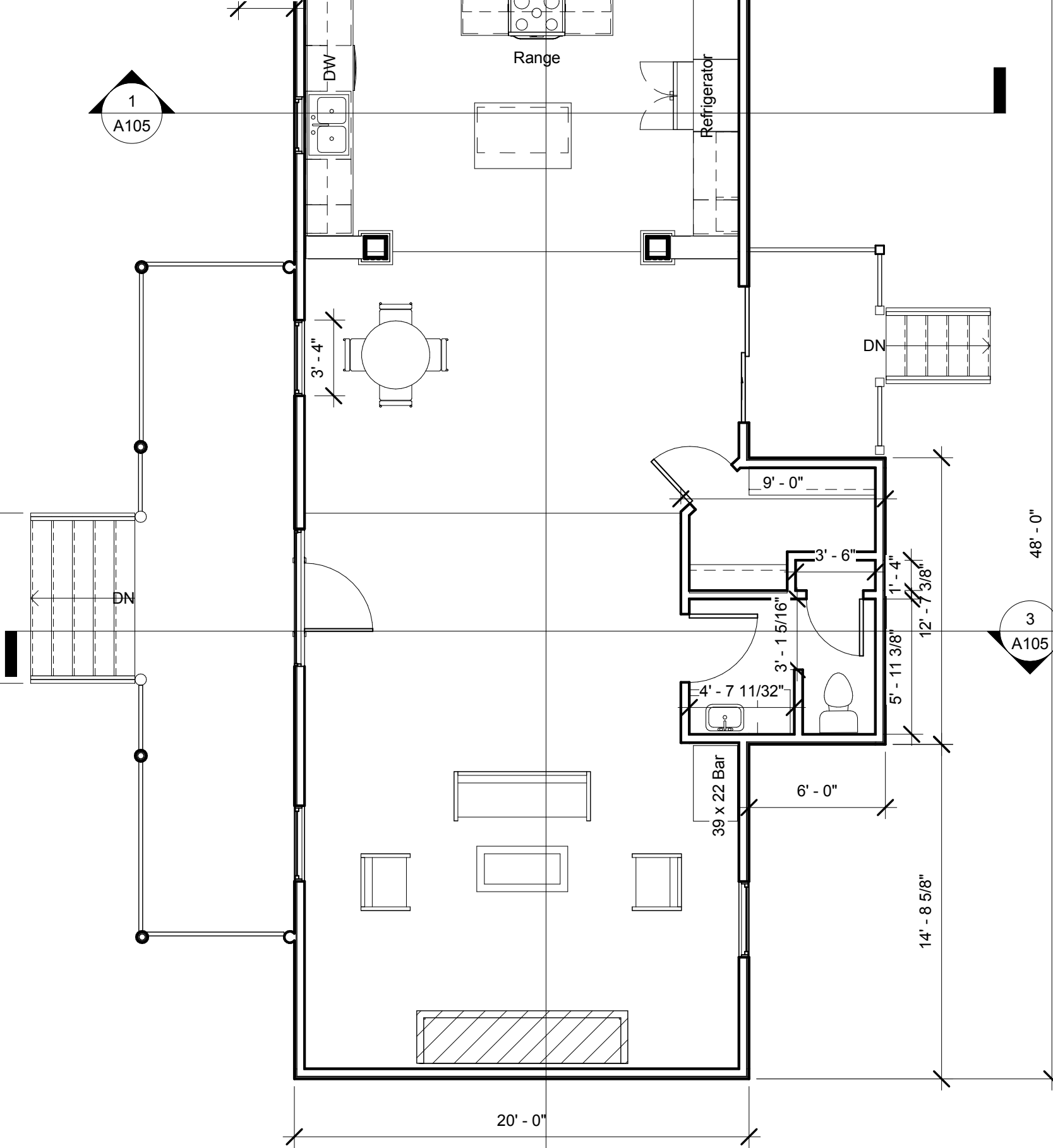
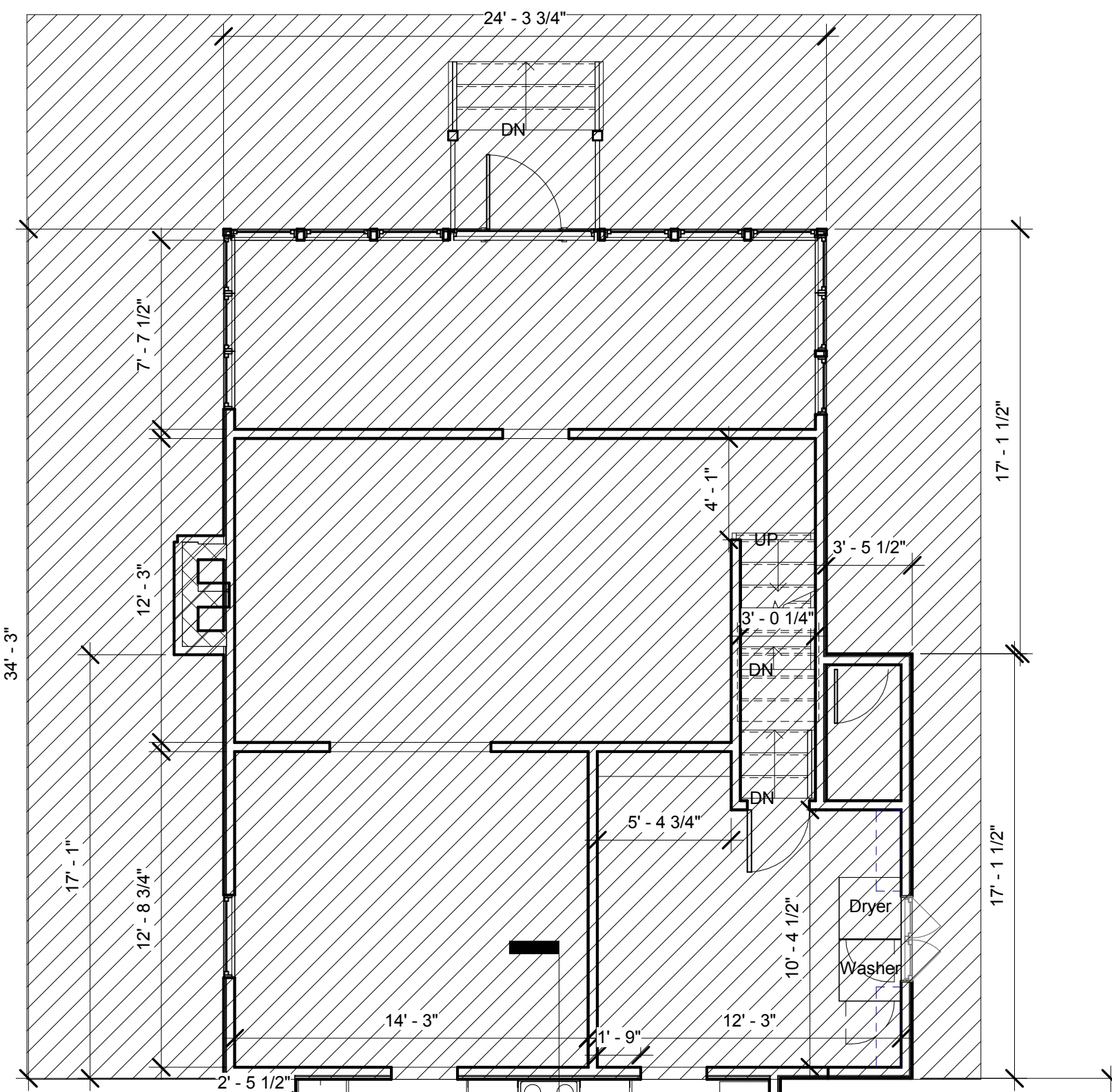
Typically Roof/Floor Truss, Beam Suppliers/Manufacturers will supply Engineered Stamped product & layout plans for their products. P.S. Most Area's do not require Architectural Stamped plans, check with local building department for requirements.

Plan Ownership:

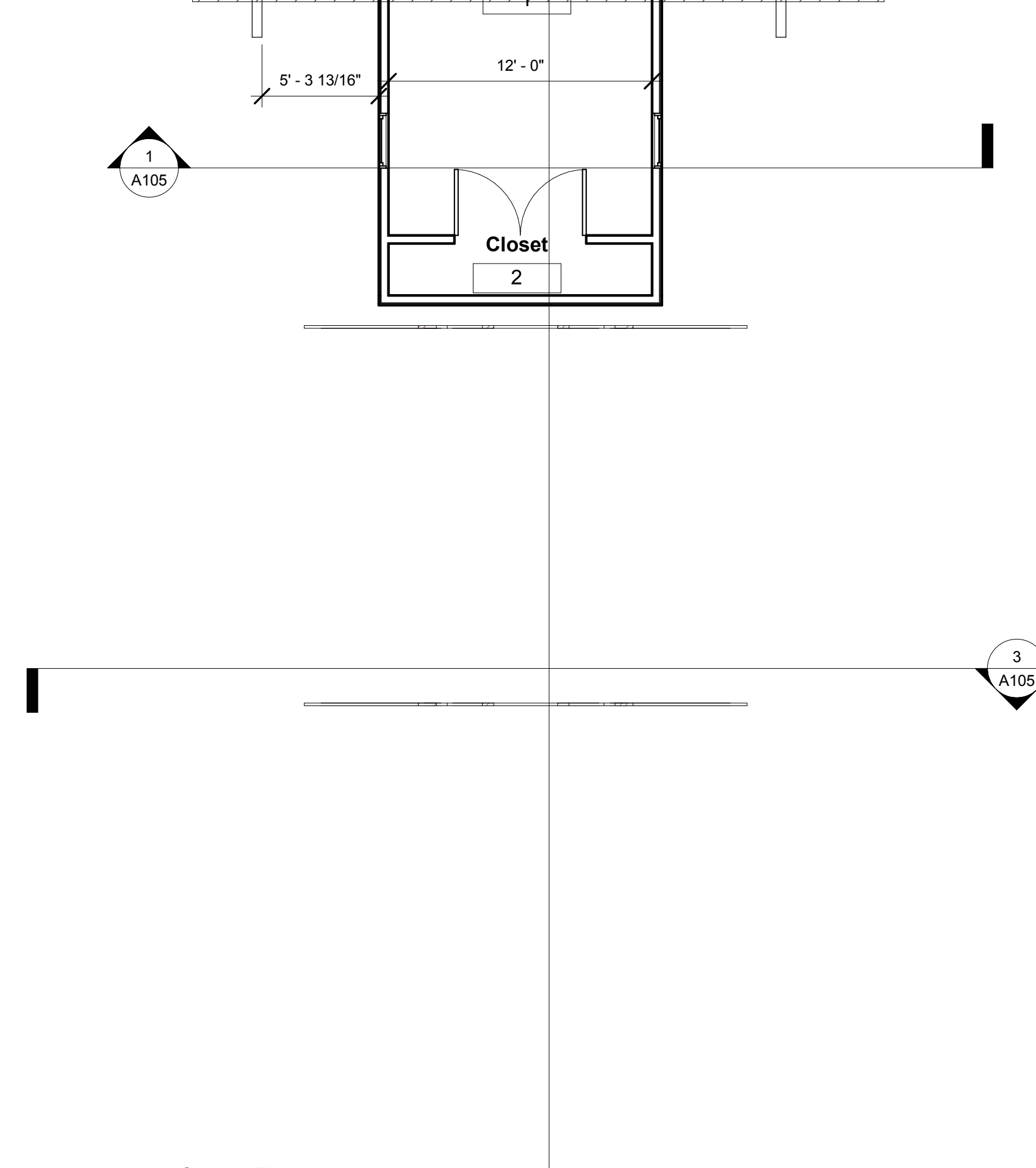
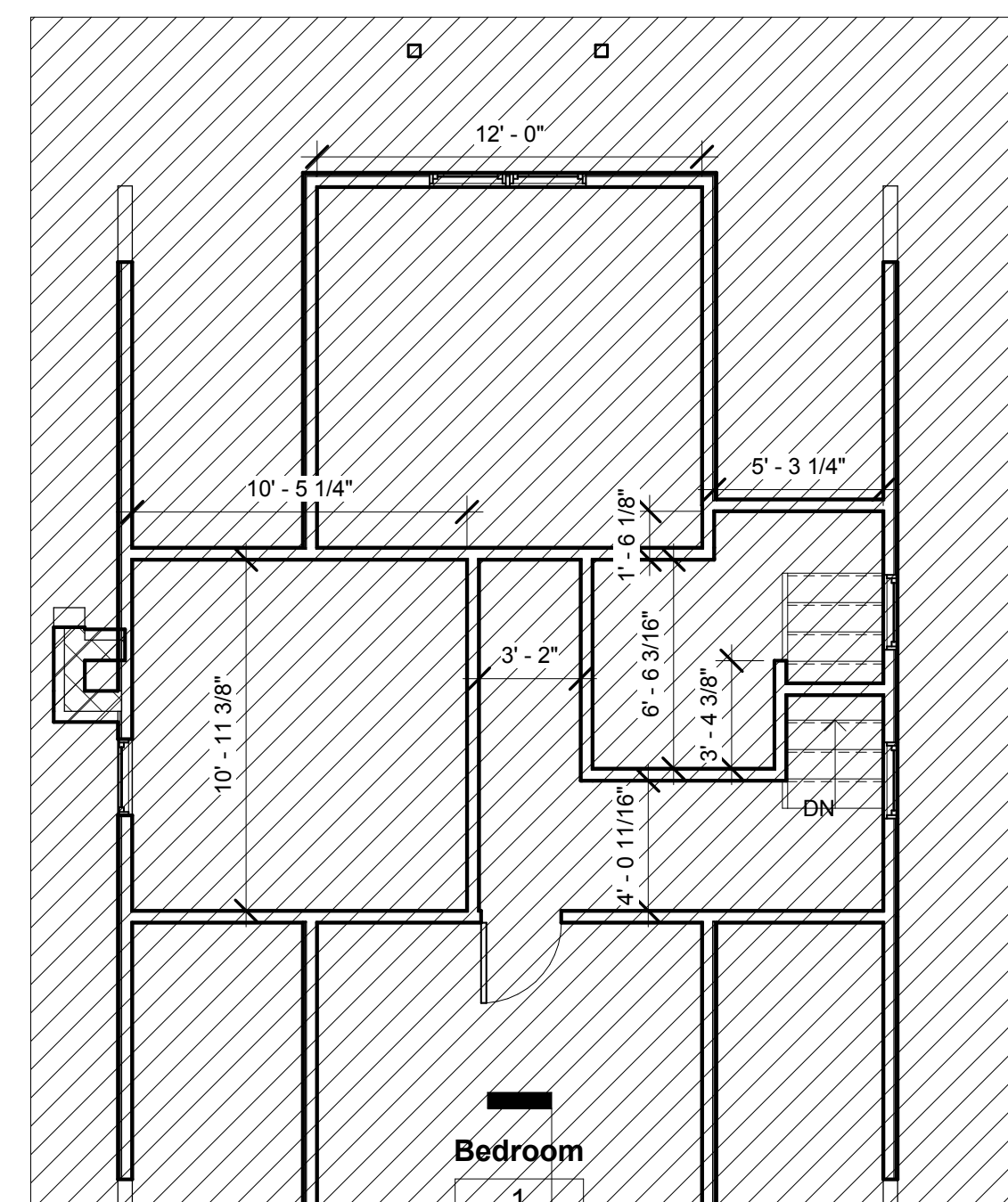
After plans are complete, Both parties will own & be free to reproduce and or sell plans.



1 Basement Level
3/16" = 1'-0"



2 First Floor Level
3/16" = 1'-0"



3 Second Floor Level
3/16" = 1'-0"

New Floor Plans

Revisions #5	
Date	10/13/2017
Drawn by	RJR
Checked by	GH

A101

Scale 3/16" = 1'-0"



R&R Drafting

Note: I do not offer Architectural / Engineered Stamped plans. If you need stamped plans you will have to contact local Engineer to add any necessary detailed drawings to plans & to Stamped or Certify the Drawing Plans.

Typically Roof/Floor Truss, Beam Suppliers/Manufactures will supply Engineered Stamped product & layout plans for their products. P.S. Most Area's do not require Architectural Stamped plans, check with local building department for requirements.

Plan Ownership:
After plans are complete, Both parties will own & be free to reproduce and or sell plans.



① East
 1/4" = 1'-0"



② West
 1/4" = 1'-0"

- Second Floor Ceiling Level 16' - 5 7/8"
- Second Dining ceiling Level 8' - 9' - 0"
- First Floor Level 0' - 0"
- Level 9 -1' - 1 1/2"
- Ground Level -3' - 5 1/2"
- Basement Level -7' - 5 3/4"
- New TOF -8' - 5 3/4"

New Elevation Plan

Revisions #5	
Date	10/13/2017
Drawn by	RJR
Checked by	GH

A102

Scale 1/4" = 1'-0"



R&R Drafting

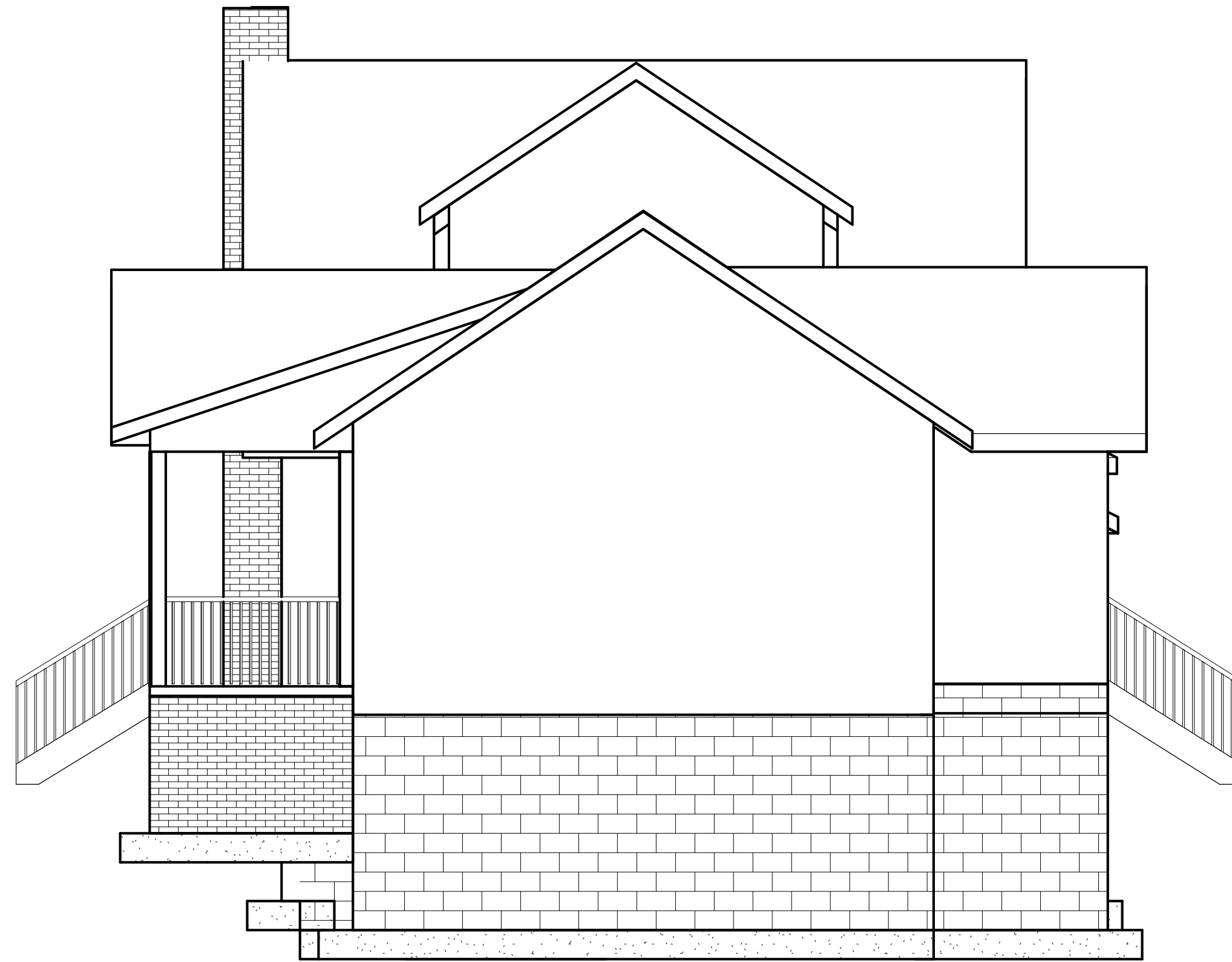
Note: I do not offer Architectural / Engineered Stamped plans. If you need stamped plans you will have to contact local Engineer to add any necessary detailed drawings to plans & to Stamped or Certify the Drawing Plans.

Typically Roof/Floor Truss, Beam Suppliers/Manufactures will supply Engineered Stamped product & layout plans for their products.

P.S. Most Area's do not require Architectural Stamped plans, check with local building department for requirements.

Plan Ownership:

After plans are complete, Both parties will own & be free to reproduce and or sell plans.



① North
1/4" = 1'-0"



② South
1/4" = 1'-0"

New Elevation Plan

Revisions #5	
Date	10/13/2017
Drawn by	RJR
Checked by	GH

A103

Scale 1/4" = 1'-0"



R&R Drafting

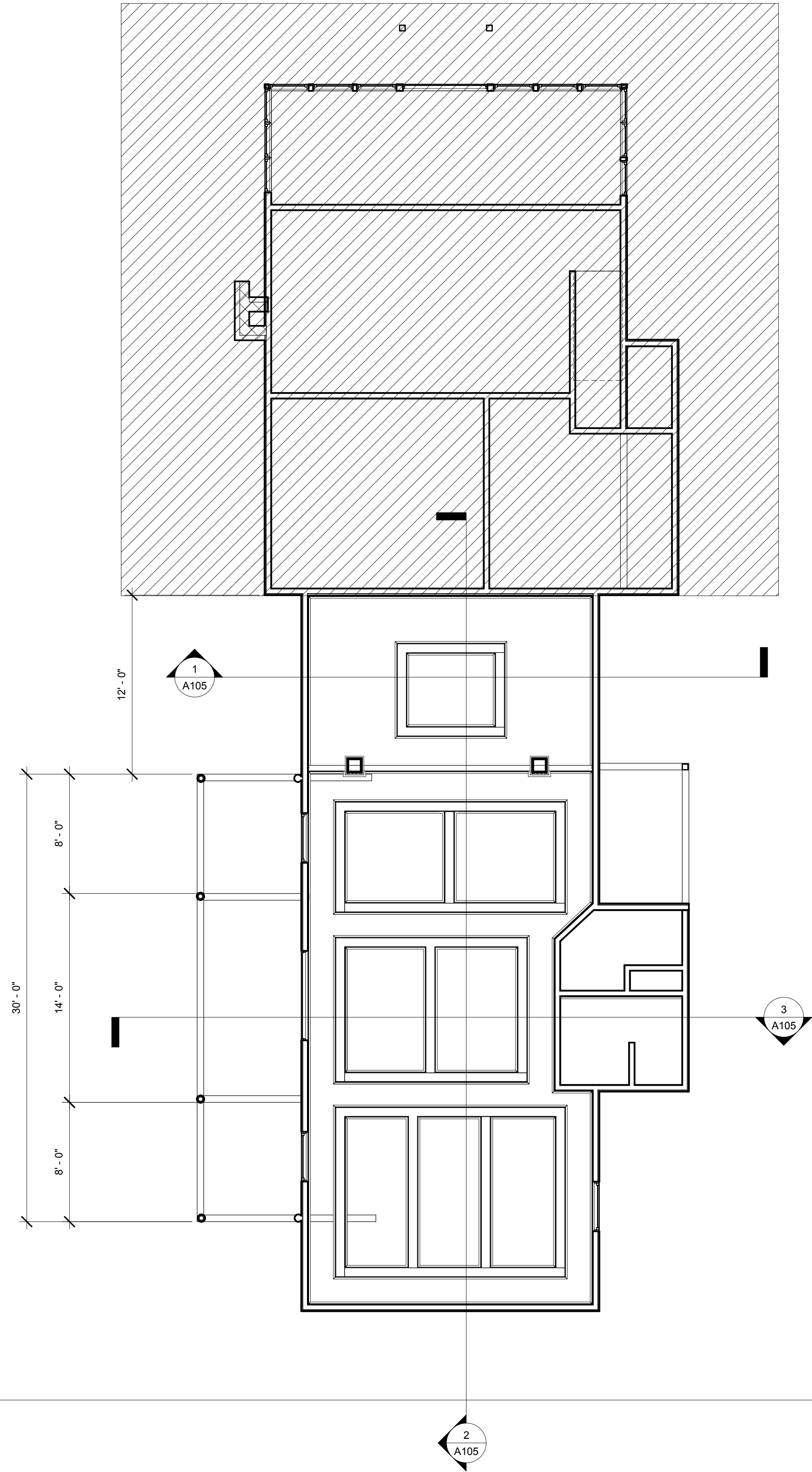
Note: I do not offer Architectural / Engineered Stamped plans. If you need stamped plans you will have to contact local Engineer to add any necessary detailed drawings to plans & to Stamped or Certify the Drawing Plans.

Typically Roof/Floor Truss, Beam Suppliers/Manufactures will supply Engineered Stamped product & layout plans for their products.

P.S. Most Area's do not require Architectural Stamped plans, check with local building department for requirements.

Plan Ownership:

After plans are complete, Both parties will own & be free to reproduce and or sell plans.



① First Floor Level
3/16" = 1'-0"

Ceiling Plan

Revisions #5	
Date	10/13/2017
Drawn by	RJR
Checked by	GH

A104

Scale 3/16" = 1'-0"



R&R Drafting

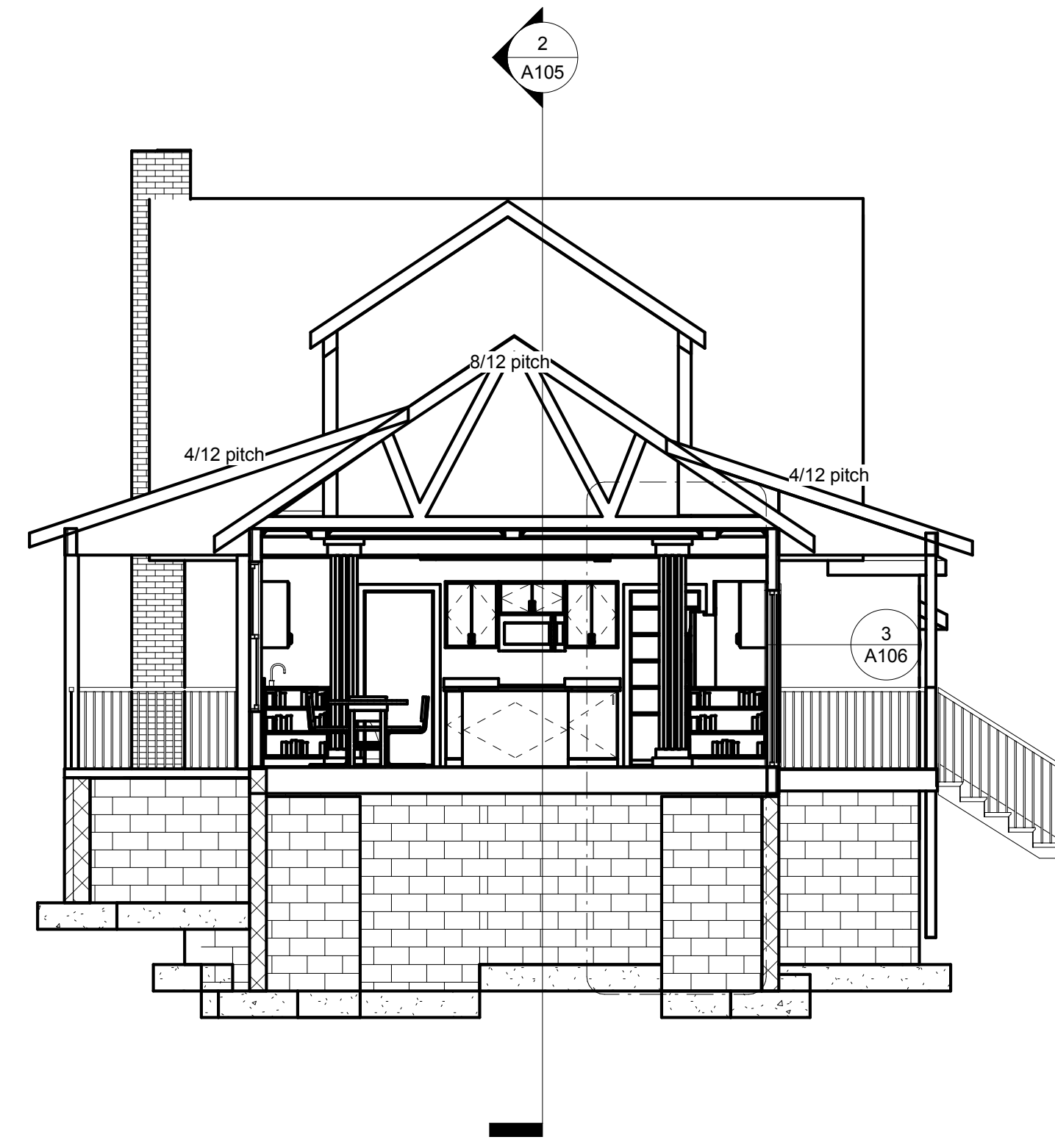
Note: I do not offer Architectural / Engineered Stamped plans. If you need stamped plans you will have to contact local Engineer to add any necessary detailed drawings to plans & to Stamped or Certify the Drawing Plans.

Typically Roof/Floor Truss, Beam Suppliers/Manufactures will supply Engineered Stamped product & layout plans for their products.

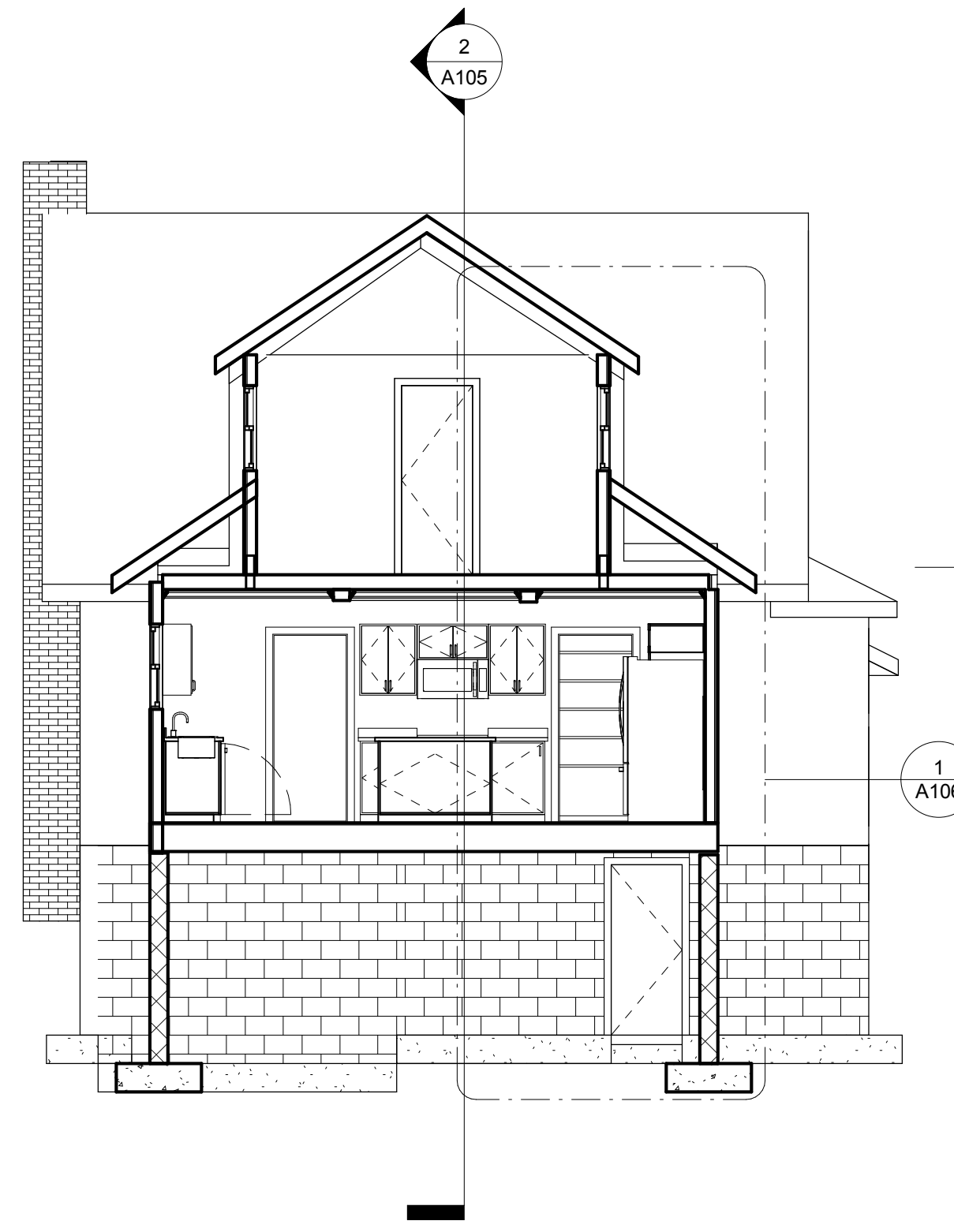
P.S. Most Area's do not require Architectural Stamped plans, check with local building department for requirements.

Plan Ownership:

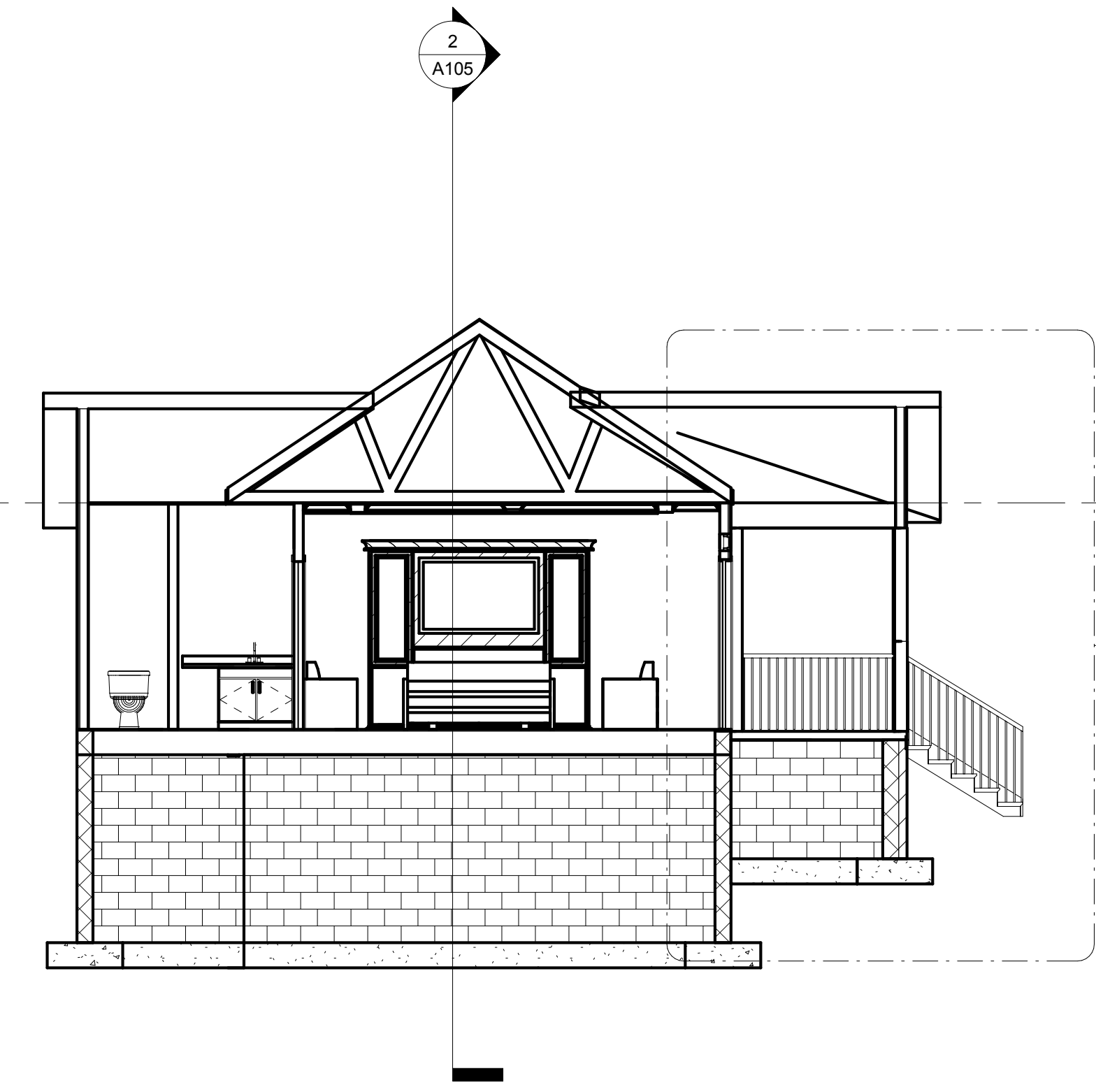
After plans are complete, Both parties will own & be free to reproduce and or sell plans.



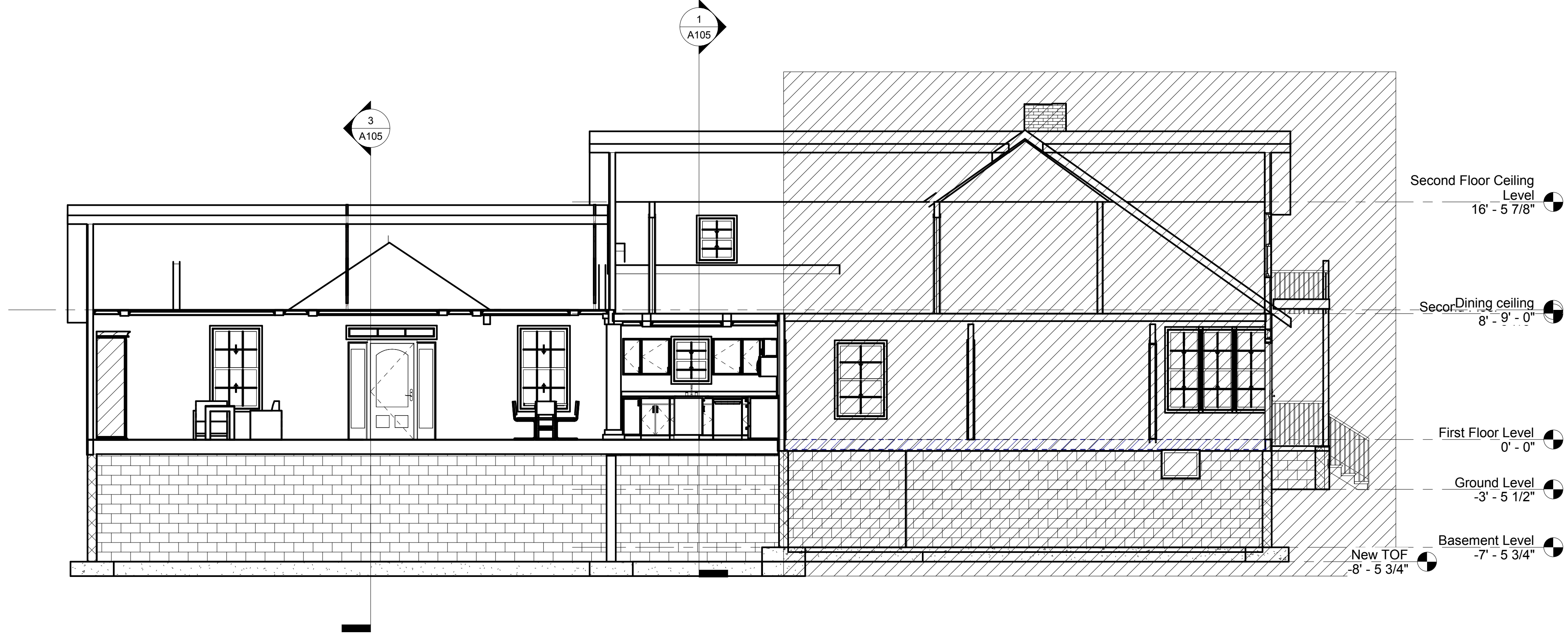
① Section 2
3/16" = 1'-0"



③ Section 4
3/16" = 1'-0"



④ Section 1
3/16" = 1'-0"



② Section 3
3/16" = 1'-0"

Cross Sections

Revisions #5	
Date	10/13/2017
Drawn by	RJR
Checked by	GH

A105

Scale 3/16" = 1'-0"



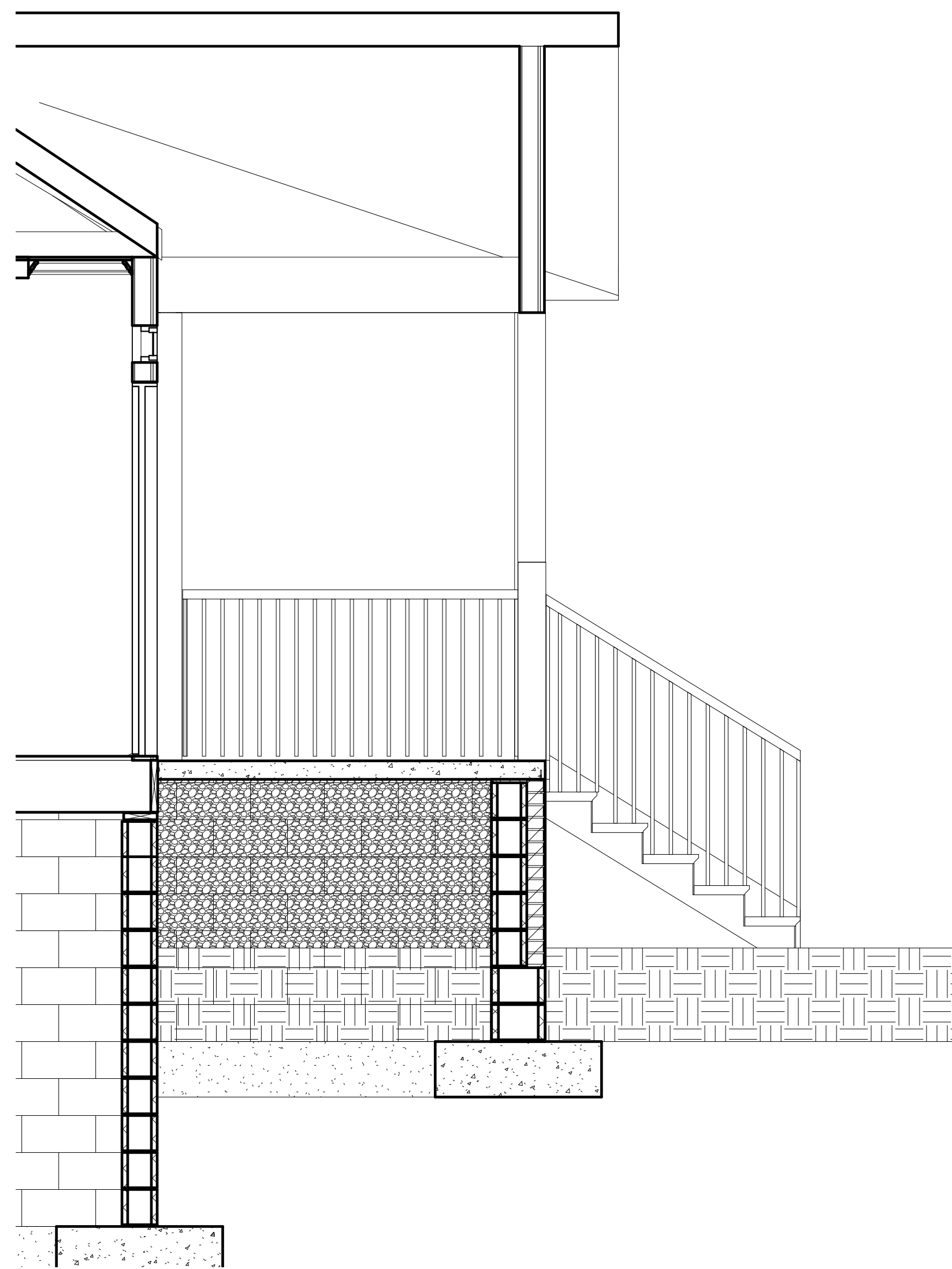
R&R Drafting

Note: I do not offer Architectural / Engineered Stamped plans. If you need stamped plans you will have to contact local Engineer to add any necessary detailed drawings to plans & to Stamped or Certify the Drawing Plans.

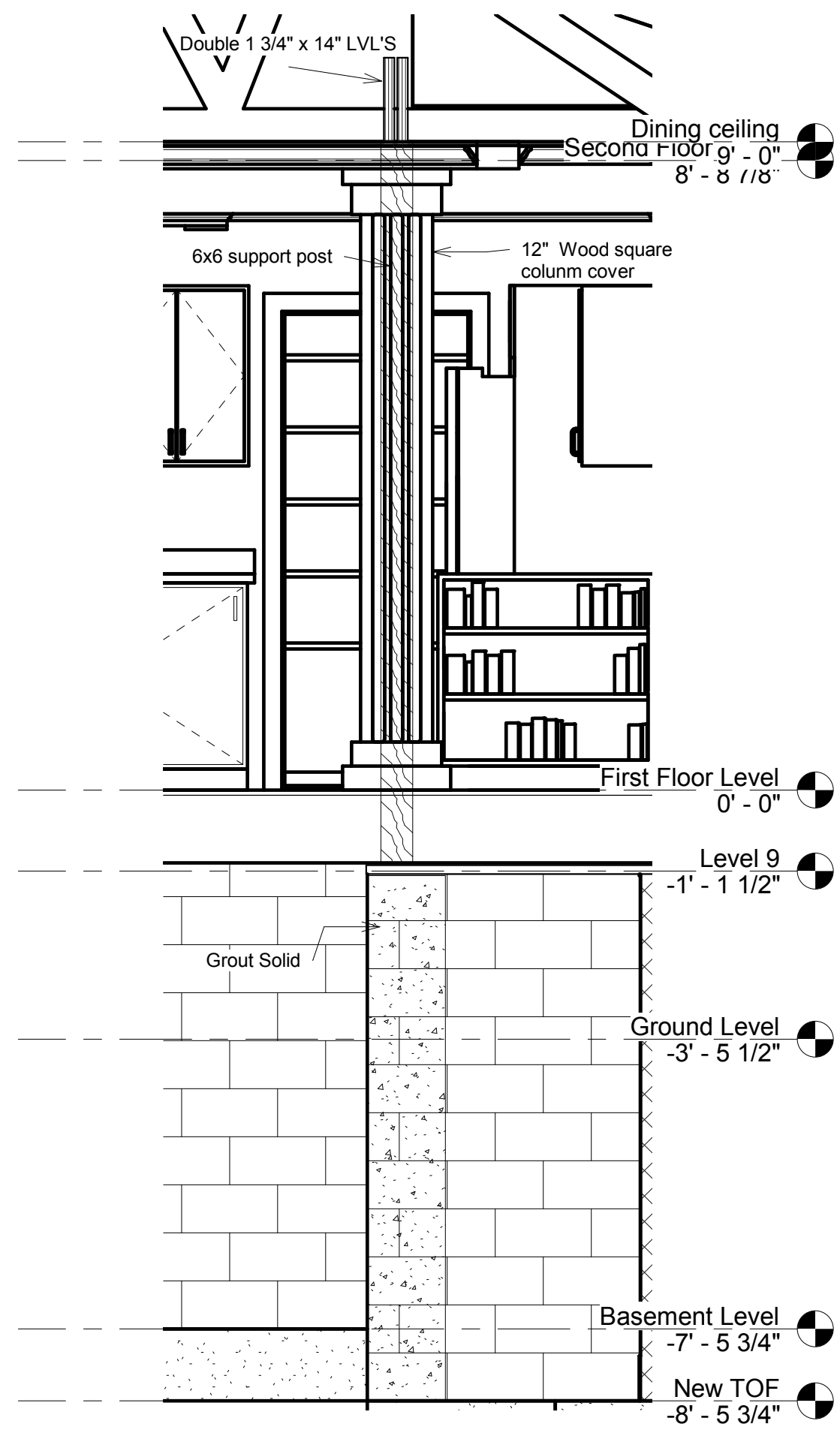
Typically Roof/Floor Truss, Beam Suppliers/Manufactures will supply Engineered Stamped product & layout plans for their products.
P.S. Most Area's do not require Architectural Stamped plans, check with local building department for requirements.

Plan Ownership:

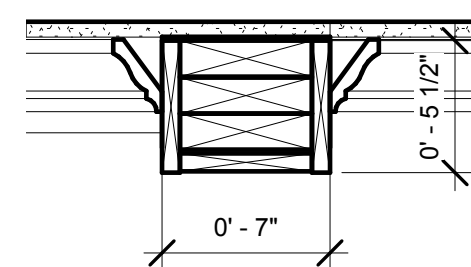
After plans are complete, Both parties will own & be free to reproduce and or sell plans.



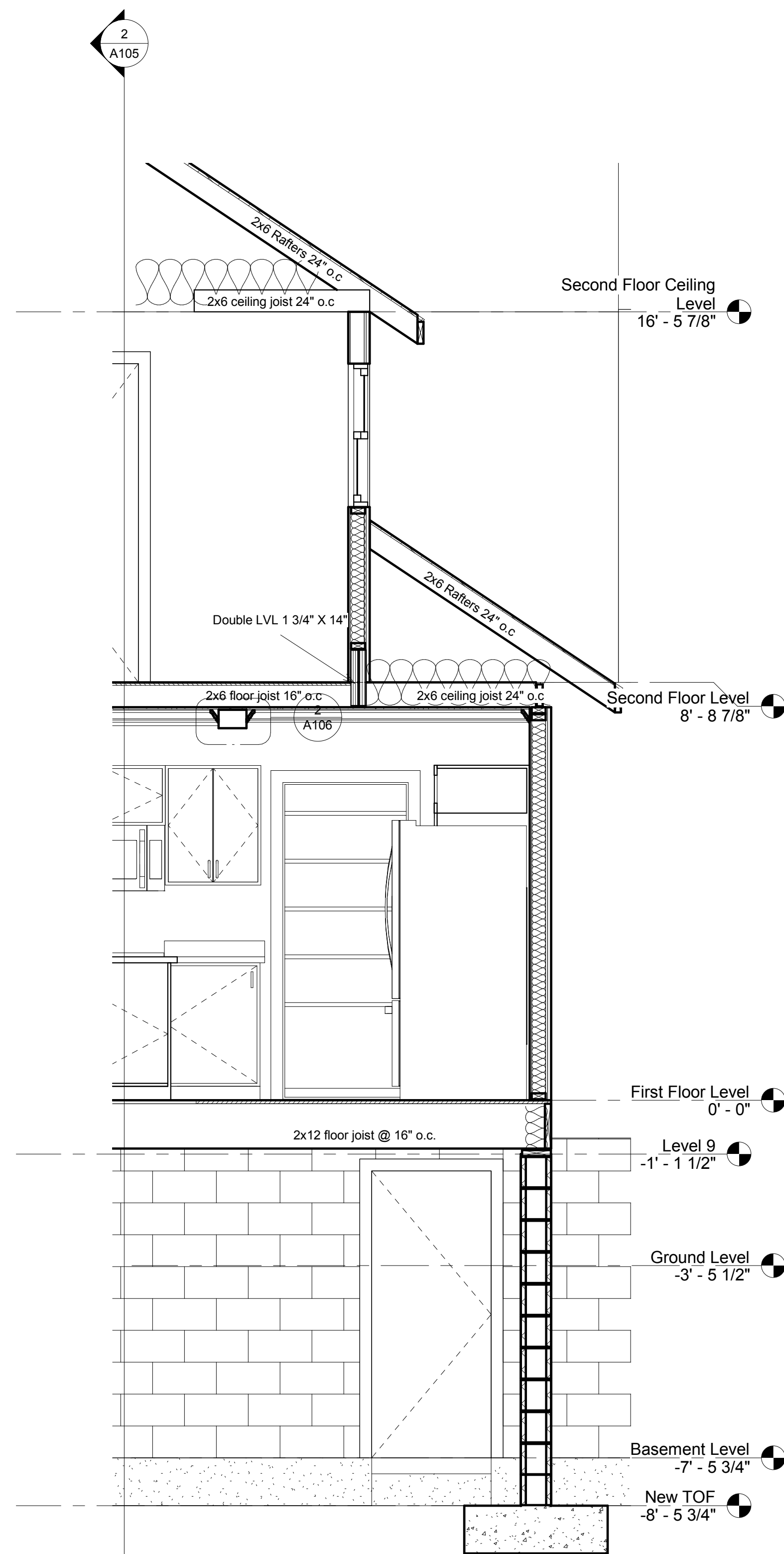
④ Section Thru Front Porch
1/2" = 1'-0"



③ Section Detail @ Columns
1/2" = 1'-0"



② Coffered ceiling detail
1 1/2" = 1'-0"



① Section Exterior Wall /second floor Framing
1/2" = 1'-0"

Details

Revisions #5
Date 10/13/2017
Drawn by Author
Checked by Checker

A106

Scale As indicated